

# LANCASHIRE AND SOUTH CUMBRIA MATERNITY AND NEONATAL EQUITY AND EQUALITY PLAN



## Our vision for improving Equity and Equality

Our vision is for Lancashire and South Cumbria to be the safest place in England for all women to have a baby and for all babies to have the best start in life.



## Who are we?

The Lancashire and South Cumbria Maternity & Neonatal System brings together partners with a specific aim to improve maternity and neonatal services:

- Four NHS Maternity Provider Trusts
- Northwest Neonatal Operational Delivery Group
- Maternity & Neonatal Voices Partnerships and service users
- NHS Lancashire and South Cumbria Integrated Care Board

## Why do we need a plan?

Statistics have shown us that Black and Asian women have a higher risk of dying in pregnancy:

WHITE WOMEN	ASIAN WOMEN	MIXED ETHNICITY	BLACK WOMEN
7/100,000	12/100,000	15/100,000	32/100,000
1 female icon	x2 2 female icons	x2 2 female icons	x4 4 female icons

In Lancashire and South Cumbria X% of our population are from a Black, Asian or mixed ethnicity background

Women living in less affluent areas have a higher risk of dying during or after pregnancy

LEAST DEPRIVED  
8/100,000  
20% 2 female icons

MOST DEPRIVED  
14/100,000  
20% 2 female icons

In Lancashire and South Cumbria 31% of our population fall into the "most deprived" category. In Blackpool - 70%

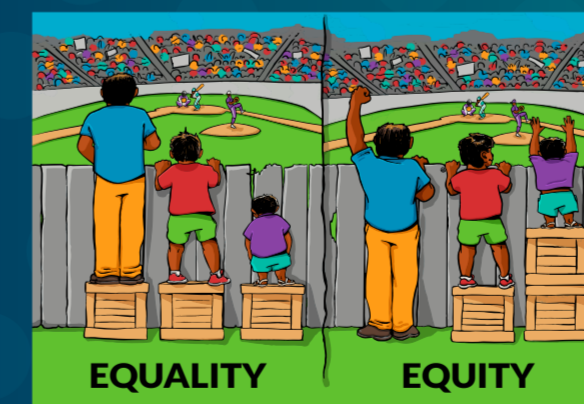
MOST DEPRIVED  
LSC  
31% 3 female icons

MOST DEPRIVED  
Blackpool  
70% 7 female icons

## WE WILL DO THIS THROUGH....

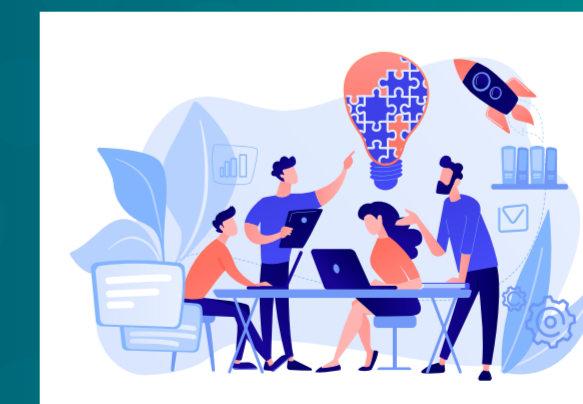
- Having the same core maternity and neonatal services available to all women & families (equality)
- Planning and providing enhanced or specialist services for those with extra needs (equity)
- Implementing care that is personalised to meet the unique needs of every woman, baby and family
- Being data and service user insight informed
- Meaningfully analyse of data
- Co-producing targeted interventions with our service users and health and care practitioners
- Collaborating with all relevant local organisations and stakeholders
- Utilising digital innovations to enable access whilst ensuring none are excluded

## Our Values



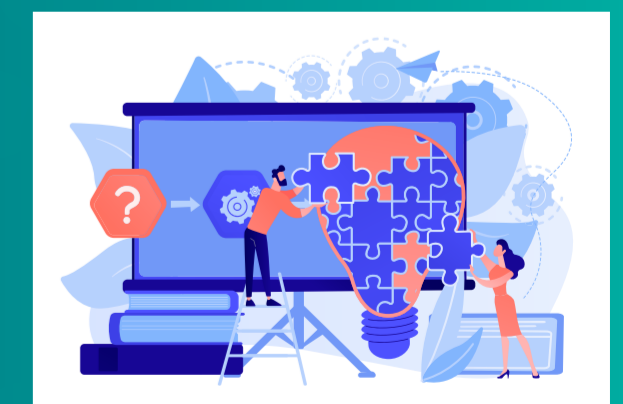
### Proportionate Universalism

To 'raise and flatten' the inequalities gradient, universal action is needed with a scale and intensity that reflects need



### Collaboration Achieving

Equity will require unity and co-ordinated effort across many stakeholders, especially to tackle the social determinates of health



### Co-production

Interventions are more likely to be culturally & socially relevant & clinically effective if parents and staff work in partnership to improve clinical quality

## The Plan

Implementing the NHS National Equity & Equality Guidance for Maternity & Neonatal Services: Equity and equality: Guidance for local maternity systems (england.nhs.uk) **Four priority areas:**

<b>PRIORITY 1:</b>	Restore NHS Services Inclusively (Covid-19 4 Actions – Complete)
<b>PRIORITY 2:</b>	Mitigate against digital exclusion
<b>PRIORITY 3:</b>	Ensure Datasets are complete and timely
<b>PRIORITY 4:</b>	Accelerate preventative programmes that engage those most at risk of poor health outcomes

1. Equity for mothers and babies from Black, Asian and mixed ethnic backgrounds, and those living in the most deprived areas
2. Race equality for staff

